

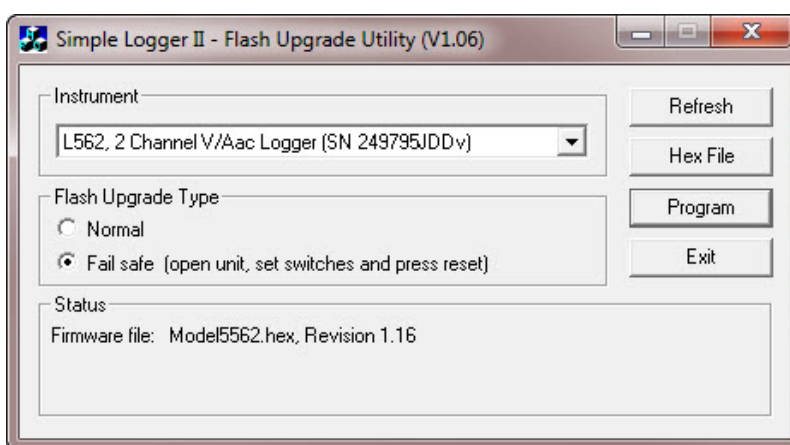
## Using the Simple Logger II-Flash Upgrade Utility Program AEMC<sup>®</sup> Simple Logger<sup>®</sup> II Models

**Step 1:** Download the firmware SLIIFlashUp116.exe or SLIIFlashUp116.zip to your desktop

**Step 2:** Connect your Simple Logger II instrument to the computer using an USB cable. (For Bluetooth models you must remove the battery cover to access the USB connector)(Fresh batteries should be installed prior to upgrade.)

**Important Note:** Any data in memory may be lost and should be saved prior to upgrading.

**Step 3:** Double click the exe file to launch the upgrade utility. A folder named SLIIFlashUp116 will be created. If the .zip file was downloaded then unzip to desktop and run FlashUp.exe from within the created folder SLIIFlashup116

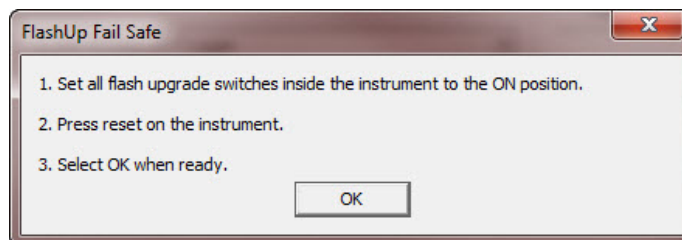


**Step 4:** The model number will appear in the drop-down list if the instrument was detected. Click "Refresh" if the list is empty.

**Note:** The firmware file will be automatically selected for the attached model.

**Step 5:** When upgrading to version 1.16 from 1.13 or lower it is necessary to perform a "Fail Safe" upgrade. Click on the "Program" button to start the firmware upgrade process. The following message will appear. Select "OK" once the steps are completed.

**Note:** If the program counter does not appear, it may be necessary to press the Reset button again. Refer to below captures to locate the reset and flash upgrade switches for various models in the Simple Logger II product line.



**Step 6:** Locate the flash upgrade switches and reset switch as shown below. Set all switches to the “ON” position and press reset.

**(Model CL601 Only)**

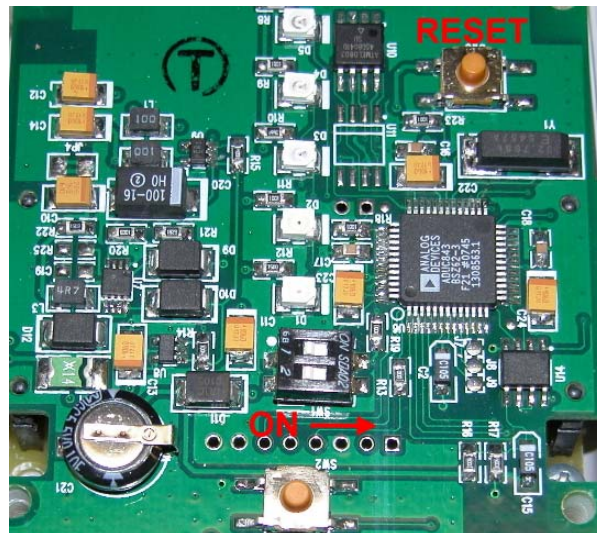
Open the battery compartment and turn both DIP switches to the “ON” position then press the reset button.



**(One and Two Channel Models)**

It is necessary to split the case in order to access the reset and flash upgrade switches to perform a “Fail Safe Upgrade”. To do this, perform the following:

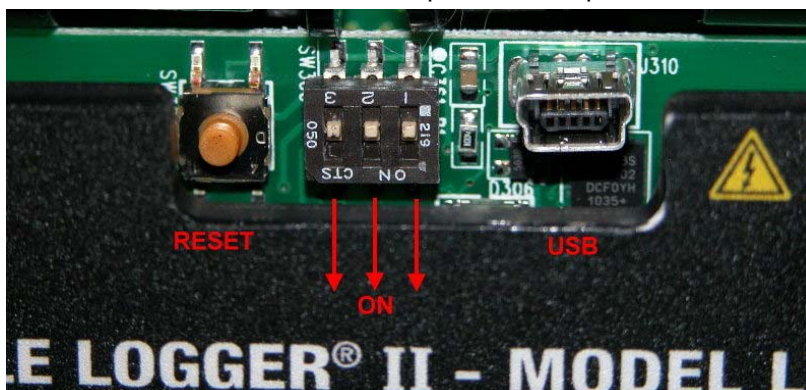
- Remove the USB cable, open the battery compartment and remove the four screws holding the two halves of the instrument together.
- Place the battery cover back on to secure the batteries during the flash up grade process.
- Remove the top cover, locate the two DIP switches on the exposed PCB and turn both DIP switches to the “ON” position.
- Reconnect the USB cable and press the reset button before selecting “OK” from the flash upgrade program.



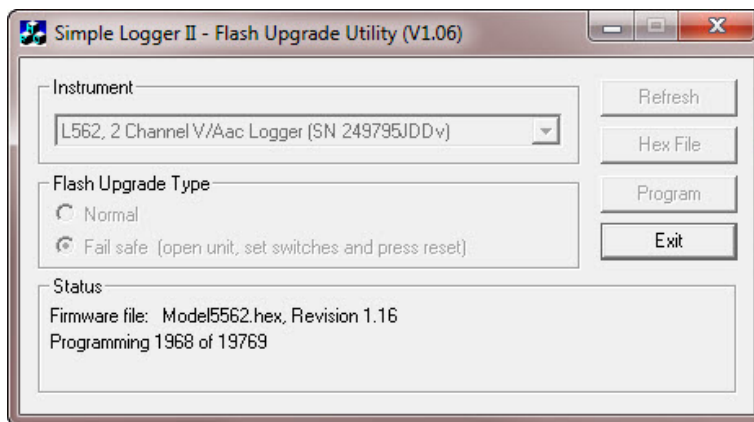
**NOTE:** Older revisions have the reset switch next to the “Press” switch.

#### 4 Channel Models

Remove the battery cover to expose the USB connector, flash upgrade switches and reset switch as shown. Turn all three DIP switches to the "ON" position then press the Reset button.



**Step 8:** Select OK to start loading the firmware into the instrument. This will take about a minute. During this process you should see the Programming count increase. See below:



**Step 9:** Once completed the following message will appear. Switch all of the DIP switches to the off position and press reset.



**Step 10:** Assemble the unit in the reverse order.

**Firmware Upgrade is complete**